



Bague Roxtec RS Ex avec SL RS

Bague certifiée Ex, à souder, pour câble ou tuyauterie unique.

La solution Roxtec RS Ex avec SL RS est une passage certifié pour les zones classées Ex e et Ex tb. Elle est composée d'une douille métallique et conçue pour un câble ou une tuyauterie unique. The entry seal has two halves with removable layers making it adaptable to cables and pipes of different sizes. The sleeve is welded to the structure.



- Résistant aux rongeurs
- Installation facile et rapide

Caractéristiques du produit



Coupe-feu



Étanche à l'eau



Étanche au gaz



Certifié ATEX

Structure d'installation



Métal

Type de fixation



Soudage

Classements et certificats

- | Feu | Étanchéité | Supports |
|--|--|---|
| <ul style="list-style-type: none">● CLASSE A conformément au code FTP IMO 2010● CLASSE H selon IMO 2010 FTP Code + Courbe de charge calorifique HC● Jetfire selon ISO 22899-1 et OTI 95634 | <ul style="list-style-type: none">● Gaz: 2,67 bars (catastrophique)● Eau: 4 bars (catastrophique) | <ul style="list-style-type: none">● Certifié ATEX |

Éléments d'étanchéité

Éléments d'étanchéité



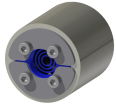
Kit RS W Ex

Pour plus d'informations, veuillez consulter [roxtec.com](https://www.roxtec.com).

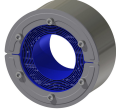


Kits de passage préconfigurés

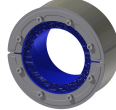
mm/kg



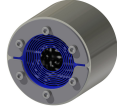
RS 25 W Ex
AISI316/PRIMED



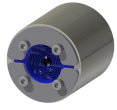
RS 125 W Ex AISI316
WOC/PRIMED



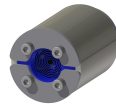
RS 150 W Ex AISI316
WOC/AISI316



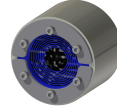
RS 75 W Ex
AISI316/AISI316



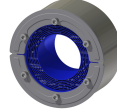
RS 50 W Ex
AISI316/AISI316



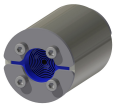
RS 43 W Ex
AISI316/AISI316



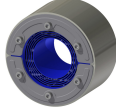
RS 75 W Ex
AISI316/PRIMED



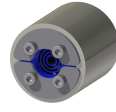
RS 125 W Ex AISI316
WOC/AISI316



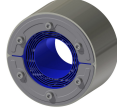
RS 43 W Ex
AISI316/PRIMED



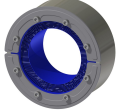
RS 100 W Ex AISI316
WOC/PRIMED



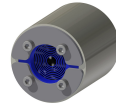
RS 25 W Ex
AISI316/AISI316



RS 100 W Ex AISI316
WOC/AISI316



RS 150 W Ex AISI316
WOC/PRIMED



RS 50 W Ex
AISI316/PRIMED

Titre	Configuration	Dimensions d'ouverture Ø	Poids	N° art.
RS 100 W Ex AISI316/AISI316			2.3	EXRSW1000002121
RS 25 W Ex AISI316/PRIMED	1x (3.6-12.0)	25 - 26	0.17	EXRSW0250002112
RS 125 W Ex AISI316 WOC/PRIMED	1x (66.0-98.0)	125 - 127	2.9	EXRSW0125102112
RS 150 W Ex AISI316 WOC/AISI316	1x (93.0-119.0)	150 - 152	3.2	EXRSW0150102121
RS 100 W Ex AISI316/PRIMED			2.2	EXRSW1000002112
RS 75 W Ex AISI316/AISI316	1x (24.0-54.0)	75 - 77	1.5	EXRSW0750102121
RS 50 W Ex AISI316/AISI316	1x (8.0-30.0)	50 - 52	0.9	EXRSW0500002121
RS 43 W Ex AISI316/AISI316	1x (4.0-23.0)	43 - 45	0.6	EXRSW0430102121
RS 75 W Ex AISI316/PRIMED	1x (24.0-54.0)	75 - 77	1.5	EXRSW0750002112
RS 125 W Ex AISI316 WOC/AISI316	1x (66.0-98.0)	125 - 127	3.2	EXRSW0125102121
RS 43 W Ex AISI316/PRIMED	1x (4.0-23.0)	43 - 45	0.6	EXRSW0430002112
RS 125 W Ex AISI316/PRIMED			3.2	EXRSW1250002112
RS 125 W Ex AISI316/AISI316			3.2	EXRSW1250002121
RS 100 W Ex AISI316 WOC/PRIMED	1x (48.0-70.0)	100 - 102	2	EXRSW0100102112
RS 25 W Ex AISI316/AISI316	1x (3.6-12.0)	25 - 26	0.24	EXRSW0250002121
RS 100 W Ex AISI316 WOC/AISI316	1x (48.0-70.0)	100 - 102	2.3	EXRSW0100102121
RS 150 W Ex AISI316 WOC/PRIMED	1x (93.0-119.0)	150 - 152	3.2	EXRSW0150102112
RS 50 W Ex AISI316/PRIMED	1x (8.0-30.0)	50 - 52	0.9	EXRSW0500002112

The product information provided by Roxtec does not release the purchaser of the Roxtec system, or part thereof, from the obligation to independently determine the suitability of the products for the intended process, installation and/or use. Roxtec gives no guarantee for the Roxtec system or any part thereof and assumes no liability for any loss or damage whatsoever, whether direct, indirect, consequential, loss of profit or otherwise, occurred or caused by the Roxtec systems or installations containing components not manufactured by an authorized manufacturer and/or occurred or caused by the use of the Roxtec system in a manner or for an application other than for which the Roxtec system was designed or intended. Roxtec expressly excludes any implied warranties of merchantability and fitness for a particular purpose and all other express or implied representations and warranties provided by statute or common law. User determines suitability of the Roxtec system for intended use and assumes all risk and liability in connection therewith. In no event shall Roxtec be liable for indirect, consequential, punitive, special, exemplary or incidental damages or losses. The Roxtec products are offered and sold in accordance with the conditions of the Roxtec General Terms of Sales. The latest version of the Roxtec General Terms of Sales can be downloaded from <https://www.roxtec.com/en/about-us/about-roxtec/general-terms-of-sales/> We reserve the right to make changes to the product and technical information without further notice. Any errors in print or entry are no claims for indemnity. The content of this publication is the property of Roxtec International AB and is protected by copyright. This document was generated on: 2024-04-23